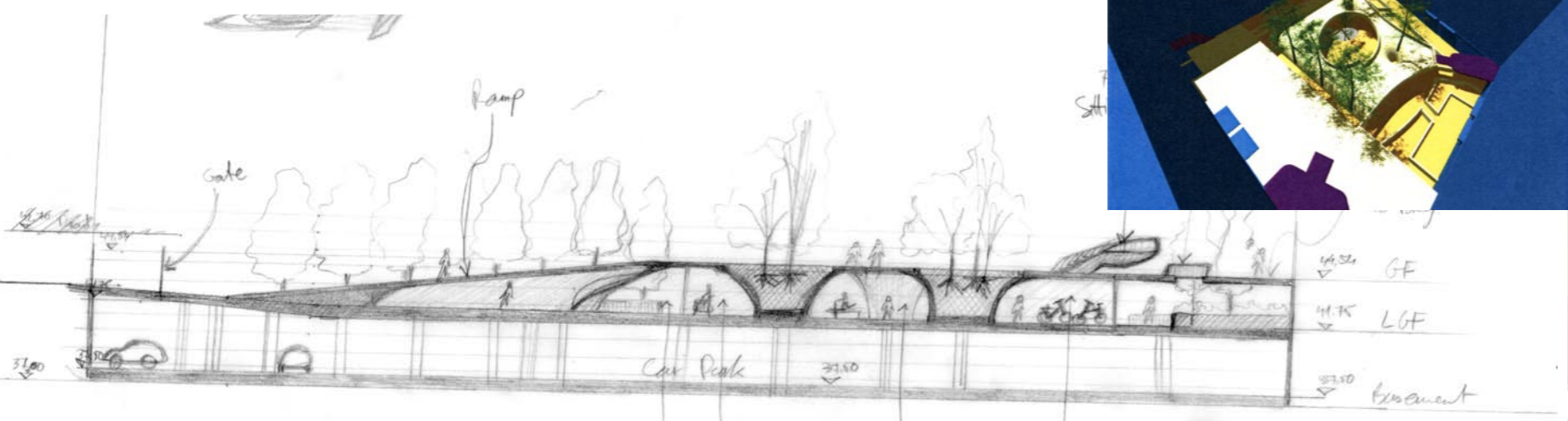
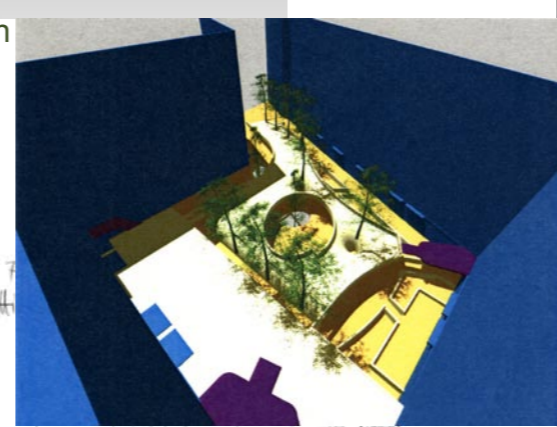


Wembley W01

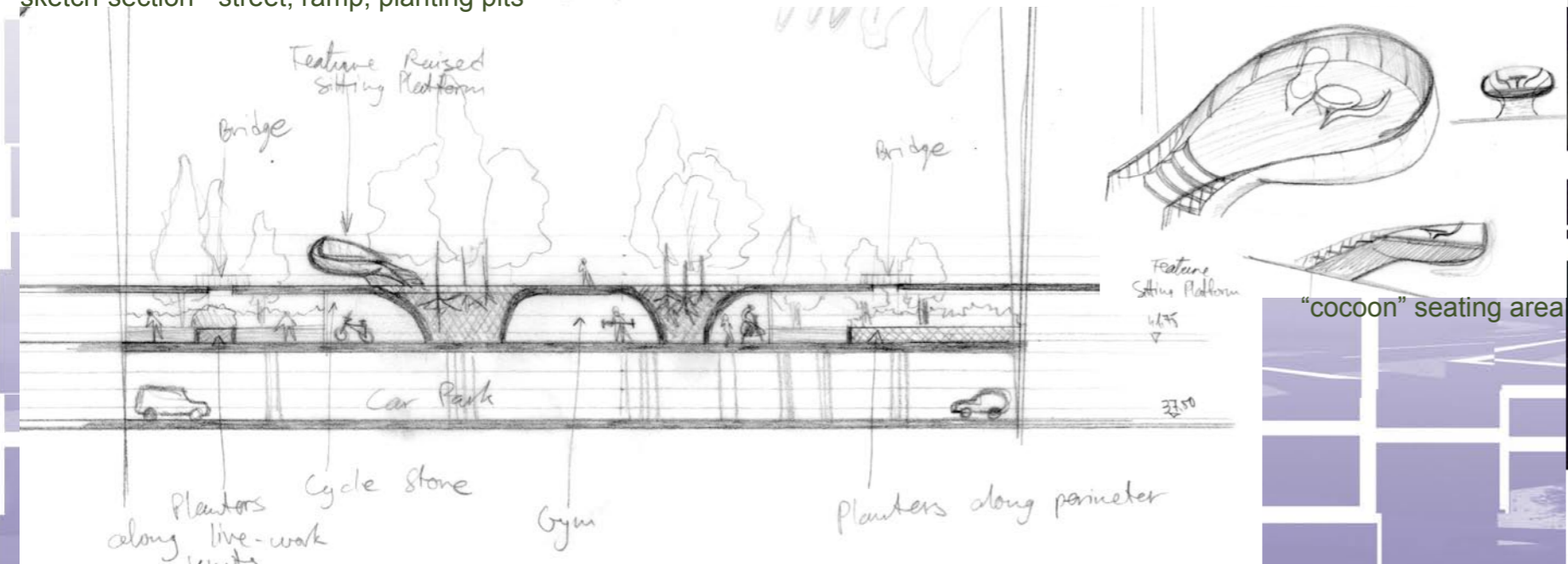
A proposal for a roof garden in Wembley W01, the first to be built from the Wembley masterplan, north London, UK

A PRP project in which I proposed a preliminary design for a roof garden covering an underground car park. The design concept was based on a white concrete "shell" that linked the two ground floor levels with the street level and provided substantial tree pits. The design aimed at integrating leisure, amenity, pedestrian and vehicular circulation, ventilation and lighting into a single structure.

courtyard roof garden

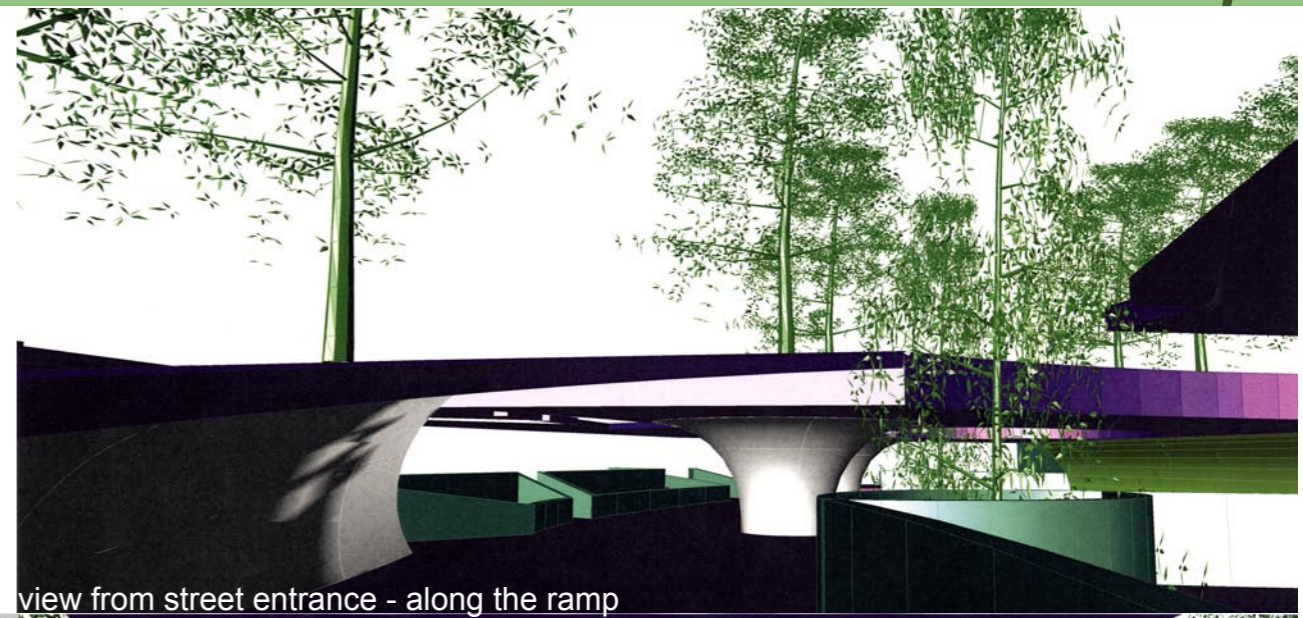


sketch-section - street, ramp, planting pits

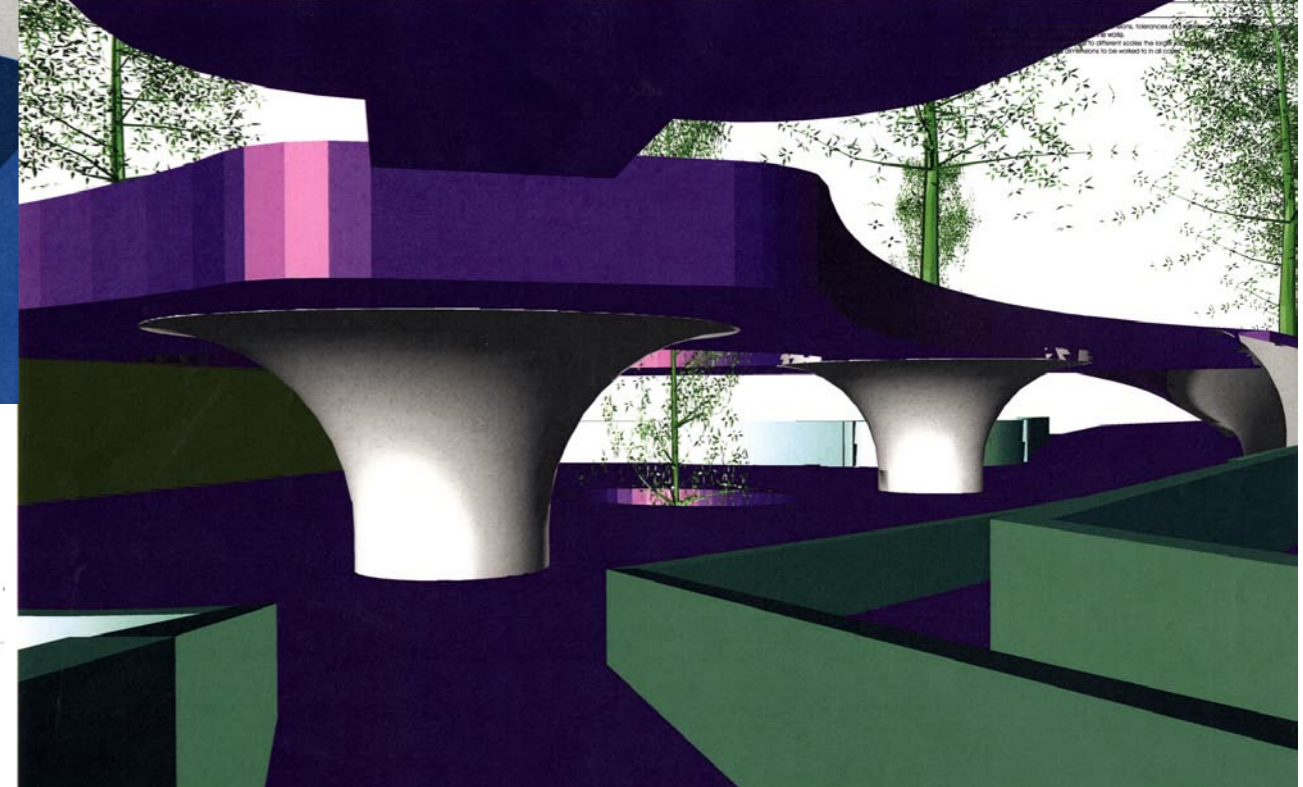


sketch-section - two ground floor levels, gym, bicycle parking, planting pits

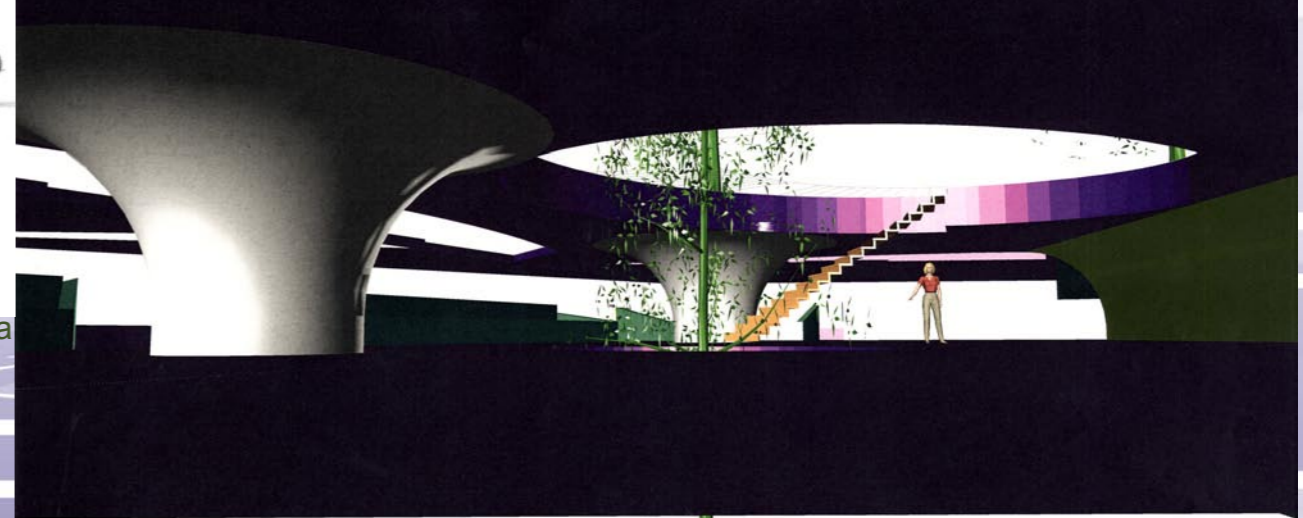
view from street entrance - along the ramp



from lower ground floor entrance



"cocoon" seating area



trees from car park "punch" through the slabs

