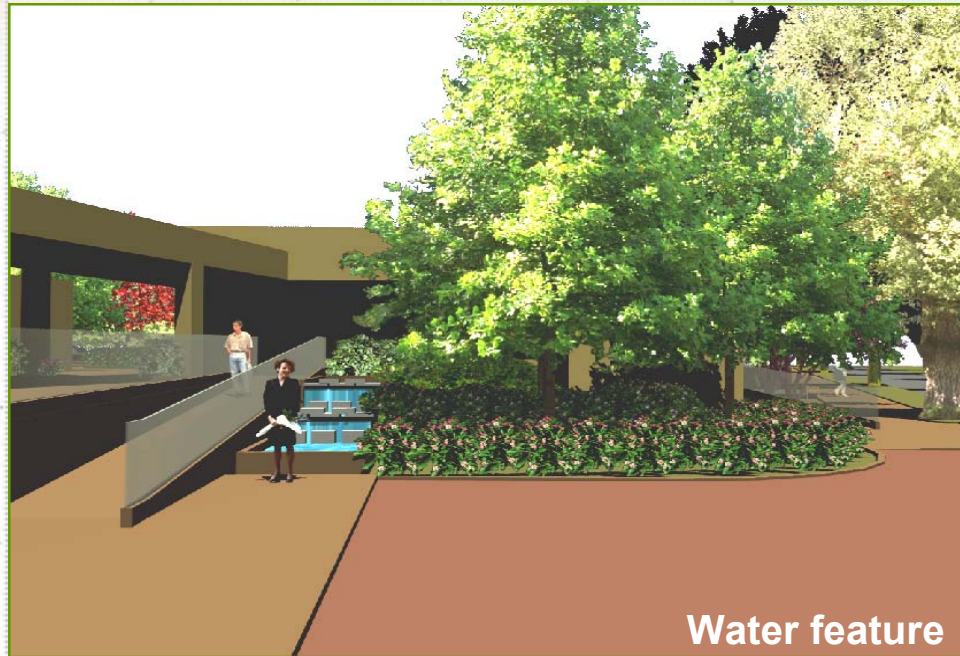


Day-Care Clinic for Elderly

A new medical complex at the Geriatric Institute in Pardes-Hanna, Israel

A 'KAV BANOF Landscape Architecture & Environmental Design' project, for which I lead the rendering and detailed design.



Water feature



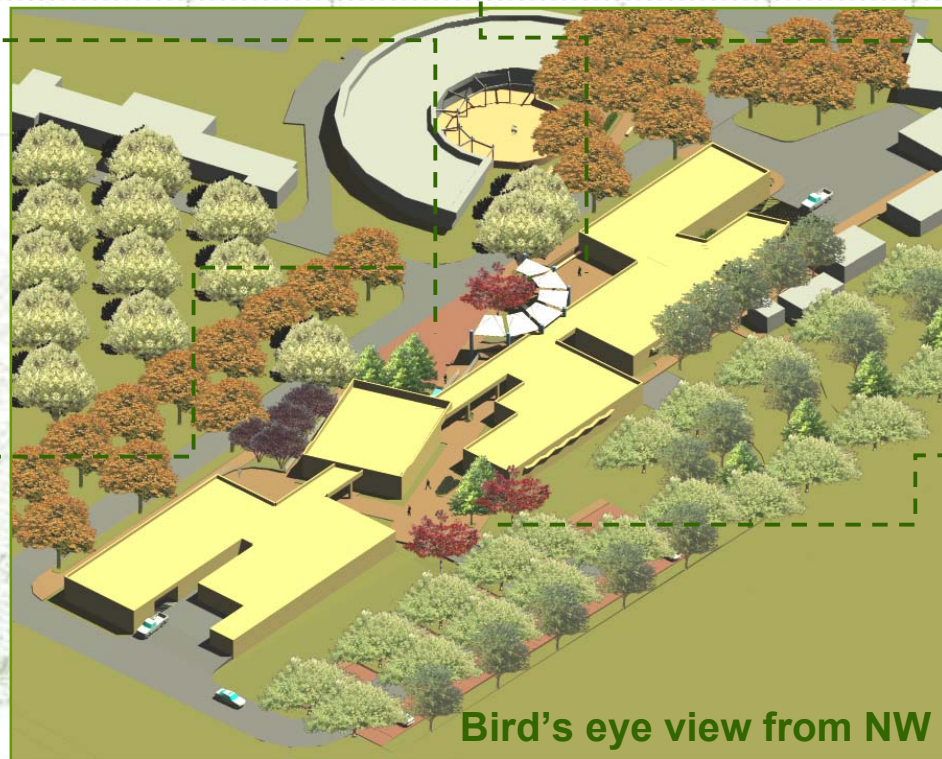
Pergola from South



Main entrance avenue



Pergola from East



Bird's eye view from NW



Entrance from car park